

Instruction Sheet

Follow these instructions to install Shields on the FQG60-T transformer boxes.

Subject: FQG60-T Transformer Box Shield Kit Instructions

Models affected: FQG60-T Fryers

06/18/2021

1. Disconnect the power from the fryer.
2. Relocate the fryer to gain access to the rear of the fryer.
3. Locate the two (2) 7/16" nuts attaching the transformer box to the frame (see Figure 1).

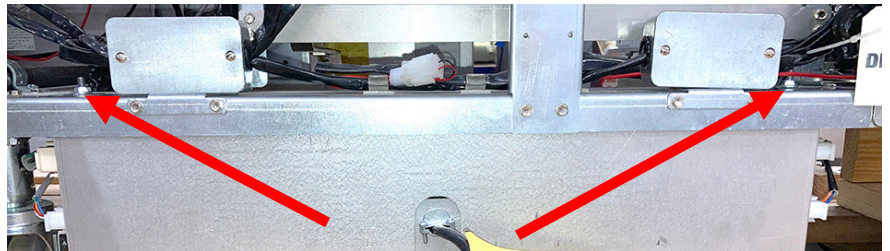


Figure 1

4. Loosen the nuts to allow the transformer box to drop slightly down away from the frame, but **DO NOT** not remove the nuts (see Figure 2).



Figure 2

5. There are location specific left and right shields. The left shield is denoted by an upper case "L" (see Figure 3). The right shield is denoted by a lower case "r" see Figure 4).

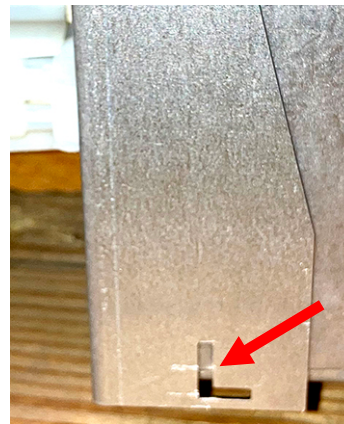


Figure 3

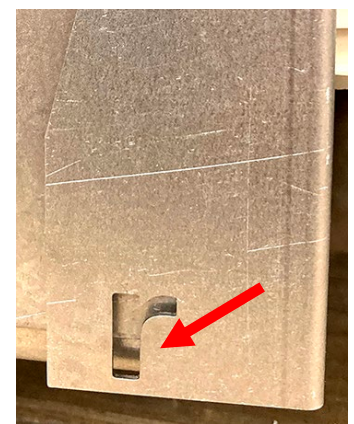


Figure 4

6. There is a small space between the transformer box and the electrical connectors (see Figure 5).
7. Slide the left shield(s) to the left side of the transformer box, as viewed from the rear of the fryer. The shield **MUST** slide between the electrical connectors and the box to seal around connectors (see Figure 6). **DO NOT** disconnect the connectors to attach the shield. Connectors may need to be slightly maneuvered to slide the metal behind the connectors.

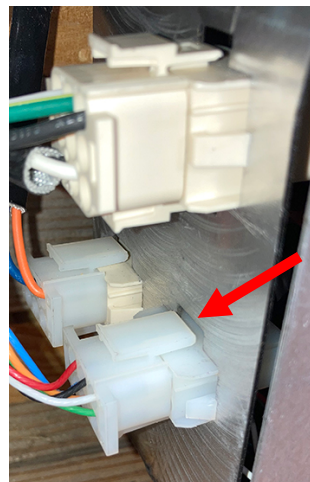


Figure 5

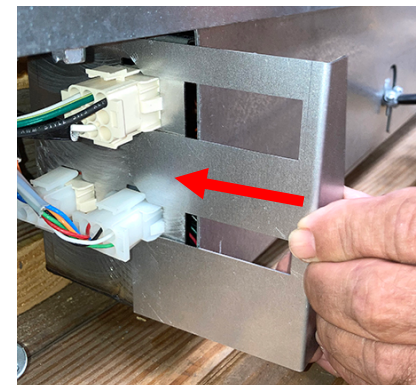


Figure 6

8. Ensure the front of the shield is pushed completely against the transformer box (see Figure 7).
9. Repeat steps 7 & 8 to attach the right shield to the right side of the transformer box (see Figure 8).
10. Tighten the nuts attaching the transformer box to the frame.
11. Repeat steps 3-10 for additional transformer boxes on the fryer.
12. Once complete, return the fryer under the hood. Reconnect power and return the fryer to service.

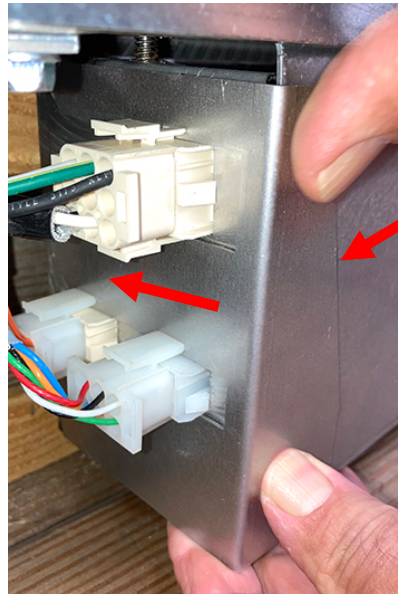


Figure 7

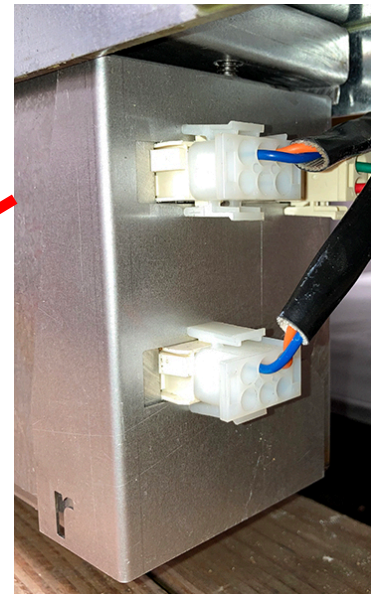


Figure 8